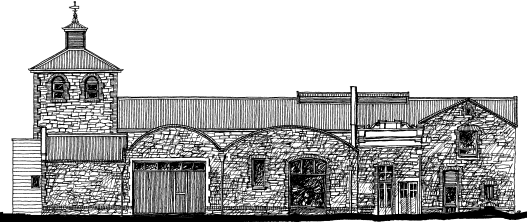


Wallbridge Gilbert

Aztec Analysis



NEWSLETTER Number Twenty Nine

January 2011

New Royal Adelaide Hospital



Image by SA Health Partnership

In December the SA Health Partnership consortium, of which Wallbridge & Gilbert is a member, was declared as the preferred proponent for the design, construction and maintenance of the New Royal Adelaide Hospital.

The new hospital will be located in Adelaide's west end. It will be Australia's most advanced hospital and the single largest infrastructure project in the state's history. It will include an emergency department capable of treating an extra 24,000 patients a year and 120 more beds than the existing facility, 40 operating theatres, single rooms with en-suites and space for treatment and rehabilitation, advanced IT systems throughout as well as gardens and open spaces across the site. W&G is providing traffic engineering as well as civil and structural engineering in a joint venture.

'45 Park', Gilberton, SA



Image provided by Watersun Binyan Studios & Tectvs

W&G has assisted with the planning submission for the proposed new \$180 million, 217 apartment residential development located on the old Channel 7 site at Gilberton.

The project includes three buildings ranging from six to ten storeys, 6,000 m² of gardens, courtyards, lawned areas, pool and gym facilities, and is targeting a 7-star Nationwide House Energy Rating for sustainable development.

Adelaide Oval Redevelopment

The Stadium Management Authority has appointed W&G to provide support civil and structural engineering to international designers Arup for the Adelaide Oval Redevelopment.

The 50,000 seat stadium will bring together football and cricket in Adelaide, and will complement the oval's existing and unique attributes. The stands will be developed as individual pavilions with crowd circulation being facilitated by covered concourses up to 10 metres wide and multi-level atriums.

Corporate facilities include 2,000 dining spaces and suites, open boxes, BBQ terraces and food courts, with more facilities on the Village Green and the grassed northern mounds.



Recent Appointments

- City West Learning Centre for UniSA**
 The \$80 million Learning Centre on Hindley Street, Adelaide will be designed to enable students and staff to access latest knowledge and practice by creating student-focused environments, rich in technology. The 12,500 m², seven-level building will include library spaces, flexible learning areas, campus support services, research facilities and social activity spaces.
- BOC Air Separation Plant 351, Dandenong, Victoria**
 Initial design has commenced on a proposed upgrade of the Dandenong plant. The new plant will produce up to 100 tonnes a day of liquid oxygen and nitrogen through an air separation process. W&G's role is to design the support structures and civil infrastructure works. The specialist equipment will be sourced from Germany and placed in a 32 metre tower.
- Wedge Street Pedestrian Bridge, City of Wyndham, Victoria.**
 Design and documentation of the piazza and bridge approaches associated with the proposed pedestrian bridge across the Werribee River.
- Castle Plaza Shopping Centre Redevelopment, SA**
 W&G has been appointed civil and structural consultant for this major redevelopment at Edwardstown, on the former Hills Industries site. It will include a new supermarket, variety store, specialty shops, pedestrian mall, undercover carparking and alterations to the existing road network to improve traffic flows around the centre. Portions of the existing centre will also be subject to significant upgrade works. Construction is expected to start in late 2011.
- Melbourne Apartment Developments**
 W&G has been appointed to undertake civil works associated with several residential developments. These include a 31-level project in Mackenzie Street Melbourne, a 10-level development in Clarendon Street South Yarra, and the 44-level 'Wrap Residence' City Road apartment complex in Southbank.

MCG Grand Final Entertainment, Melbourne

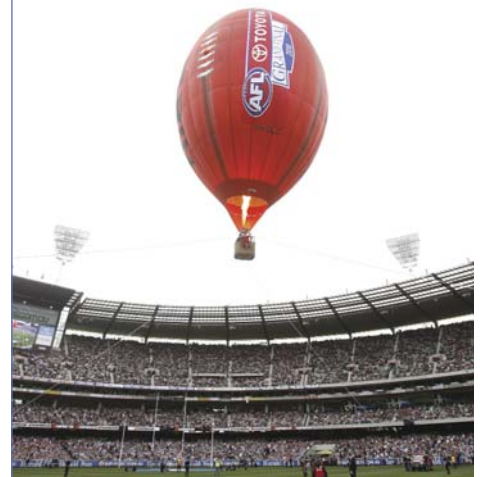


Image by Peter Jones Special Events

Wallbridge & Gilbert provided technical advice on the control of the hot-air balloon before the AFL Grand Final in September.

Noarlunga GP Plus Super Clinic, SA



Images by Cheesman Architects

Construction of the \$25 million Noarlunga GP Plus Super Clinic project is underway. Phase one of the project, which includes the new Aboriginal and Torres Strait Islander health unit (*right*) and an on-grade car park for 348 spaces, has been completed.

The main purpose-built health care facility (*above*) is currently under construction. When completed it will provide around 2,000 m² of accommodation over three levels. In addition to providing the structural and civil engineering for this project, W&G also provided all traffic engineering services to integrate the car park.



Southern Expressway Duplication, SA



Wallbridge & Gilbert is preparing the planning study to duplicate the carriageway and the associated infrastructure of Adelaide's one-way Southern Expressway. New interchanges will be built at each end with modifications to a number of the others. Lengthening of the existing bridges and maintaining traffic flow during construction are the main challenges for the project.

Construction of the \$445 million 18.5 kilometre roadway will commence in late 2011, and is scheduled to be completed by mid 2014. W&G has partnered with Parsons Brinckerhoff for this project.

Image by The Department for Transport, Energy & Infrastructure

Crown Hotel, Victor Harbor, SA



Design has commenced on the new \$80 million Crown Hotel development at Victor Harbor. The 4.5 star, nine-storey project will include 178 rooms, with basement carparking, retail shops, restaurant, bar and conference facilities.

Aerial perspective by Studio Nine Architects

Port Augusta Prison Extension, SA



A new 80-bed cell block is being constructed at Port Augusta.

The \$16 million facility consists of precast concrete cell units and prefabricated steel framing to maximise off-site work.

Lyell McEwin Hospital Redevelopment, SA



Image by Cheesman Architects/Silver Thomas Hanley

The concept phase of the \$200 million Stage C Redevelopment at Lyell McEwin has been completed. The project team will shortly appoint a Managing Contractor and look to begin construction of the first phase of the project in 2011. Wallbridge & Gilbert is providing structural and civil engineering for this project, which is expected to take five years to complete.

Camberwell Girls Grammar School, Victoria



Image by Hayball Architects

Construction has started on this new four-level education facility, incorporating a basement car park, science laboratories, library and general classrooms. W&G carried out the civil and structural engineering.

Awards



University of Adelaide Plant Accelerator Facility.

Photo courtesy of H2o Architects & Phillips/Pilkington Architects. Photographer David Sievers.

Wallbridge & Gilbert is proud to have acted as the civil/structural consultant for a number of projects recognised at award ceremonies held in 2010.

University of Adelaide Plant Accelerator

Australian Steel Institute (SA) Awards

- Winner for Steel Clad Structures Design

Australian Institute of Architects (SA) Awards

- The Keith Neighbour Award for Commercial Architecture
- Commendation Award for Sustainable Architecture

Adelaide Zoo Entrance Precinct

Australian Institute of Architects National Awards

- National Commendation for Urban Design

Australian Institute of Architects (SA) Awards

- Jack McConnell Award for Public Architecture
- Architecture Award for Sustainable Architecture
- The Robert Dickson Award for Interior Architecture
- Architecture Award for Urban Design

BPN Sustainability Awards

- Highly Commended

Stormwater Industry Associate (SA) Awards

- Winner for Integrated Sustainable Stormwater Management

Adelaide Zoo Giant Panda Exhibit

Australian Institute of Architects (SA) Awards

- Commendation for Public Architecture

Altitude Apartments

Urban Development Institute of Australia (SA) Awards

- Award for High Density Housing

Bluestone Development, Mount Barker

Urban Development Institute of Australia (SA) Awards

- Award for Residential Development

VS1, SA Water Offices, Adelaide

Property Council of Australia/Rider Levett Bucknall Innovation and Excellence Awards

- Judges' Award for SA Development of the Year

Waterproofing Salisbury

Urban Development Institute of Australia (SA) Awards

- Award for Environmental Excellence

UniSA Mawson Institute Building V, Mawson Lakes

Australian Institute of Architects (SA) Awards

- Architecture Award for Sustainable Architecture



UniSA Mawson Institute .

Photo courtesy Guida Moseley Brown Architects & Russell & Yelland Architects in association. Photographer John Gollings.

Environmental News

Wallbridge & Gilbert has continued to expand its services and now provides Environmental Management and Planning. This division is led by Dr Lissa van Camp and supported by a team of environmental scientists and engineers. Together they bring many years' experience in concept planning for major infrastructure upgrades, investigations into renewable energy options, impact assessment for urban infrastructure projects and water quality improvement projects.

Services offered include:

- Aquatic (marine and freshwater) assessments
- Environmental management systems
- Environmental impact assessments
- Greenhouse gas emission audits and reduction strategies
- Habitat assessment, monitoring, surveying and management
- Rehabilitation planning
- Stakeholder consultation and workshop facilitation
- Stormwater management
- Waste management.



Wyndham Community Jetty, Kimberley, WA

Aztec Analysis is designing a new community jetty at Wyndham in the Kimberley region of northern Western Australia. The project is being undertaken as a design & construct contract with SA company *Maritime Constructions*, and includes a large floating pontoon and an all-tide access gangway.



The jetty and associated infrastructure will improve access for the local community and will cater for the growing number of tourist boats that visit the area. Some of the unique design challenges of this project include a nine metre tidal range, cyclones, currents of five knots and saltwater crocodiles.

Macaulay Road Apartments, North Melbourne



Two five level apartment buildings have been completed at Macaulay Road. They overlook the Arden Street oval and beyond to the Bolte Bridge. W&G carried out structural engineering design.

National Water Initiative

Waterproofing Northern Adelaide (WNA) is a \$100 million stormwater recycling project undertaken by the Cities of Salisbury, Playford & Tea Tree Gully. W&G has been involved in all aspects of the \$26 million City of Playford component since project inception in 2005, which includes three major wetlands, aquifer storage and recovery (ASR) systems and 50 km of pipe distribution.



A project celebration was held in March 2010 at Stebonheath Park, Andrews Farm to open this six Ha ASR wetland and park complex. The WNA scheme will ultimately deliver 12 GL/year of treated stormwater for non-potable applications.

Youth Training Centre, Cavan



Image by Perumal Pedavoli Architects

Work is about to start on the new \$67 million Youth Training Centre at Cavan. The centre will include educational, training, physical education, health and administration facilities.

W&G carried out the civil and structural design services.

Crane Assessments, Darwin



Aztec's crane expertise now extends to Darwin, with the appointment by Channel Island Power Station to carry out 25-year structural and 10-year mechanical assessments of three large overhead travelling bridge cranes.

This follows recent similar assessments of the Blast Furnace Crane for OneSteel, Whyalla and 12 cranes at Kimberley Clark's Millicent plant.

Ifould Apartments, Adelaide



The eight-storey *Ifould Apartments* building for Housing SA has recently been opened by Housing Minister Jennifer Rankine. 85% of the 42 inner-city apartments will be released as affordable housing.

Photo by The Department for Families and Communities

Illumin8, The University of Adelaide

The new world-leading centre for science, *Illumin8*, at the University of Adelaide's North Terrace campus, will incorporate the Institute for Photonics and Advanced Sensing (IPAS), a 420-seat lecture theatre and additional teaching and research facilities.



Image by BVN Architecture in collaboration with Hames Sharley

Murray Bridge Market Place, SA



Wallbridge and Gilbert has carried out all structural and civil design for this new shopping precinct at Murray Bridge, 70 kilometres north east of Adelaide.

The \$80 million development will accommodate Woolworths, Big W, Australia Post and 45 other tenancies within a building area of approximately 23,000 m². The natural cross fall of the site towards the Murray River resulted in three levels of basement in the design.

W&G

WALLBRIDGE & GILBERT
Consulting Engineers

www.wallbridgeandgilbert.com.au

Adelaide

60 Wyatt Street
Adelaide SA 5000

Telephone (08) 8223 7433 (W&G)
Telephone (08) 8223 5190 (Aztec)
Facsimile (08) 8232 0967

adelaide@wgeng.com
adelaide@aztecanalysis.com.au

Melbourne

20 Market Street
South Melbourne VIC 3205
Telephone (03) 9696 9522
Facsimile (03) 9696 9577
wgmelb@wgmelb.com

Darwin

Wallbridge & Gilbert RFP
Suite 7, 9 Keith Lane
Fannie Bay NT 0820
Telephone (08) 8941 1678
Facsimile (08) 8941 5060
rfp@rfpeng.com

Whyalla

Level 1, 15 Darling Terrace
Whyalla SA 5600
Telephone (08) 8644 0432
Facsimile (08) 8645 0544
admin@aztecanalysis.com.au

AZTEC

Aztec Analysis

Heavy Lift Consultants
Engineers and Planners